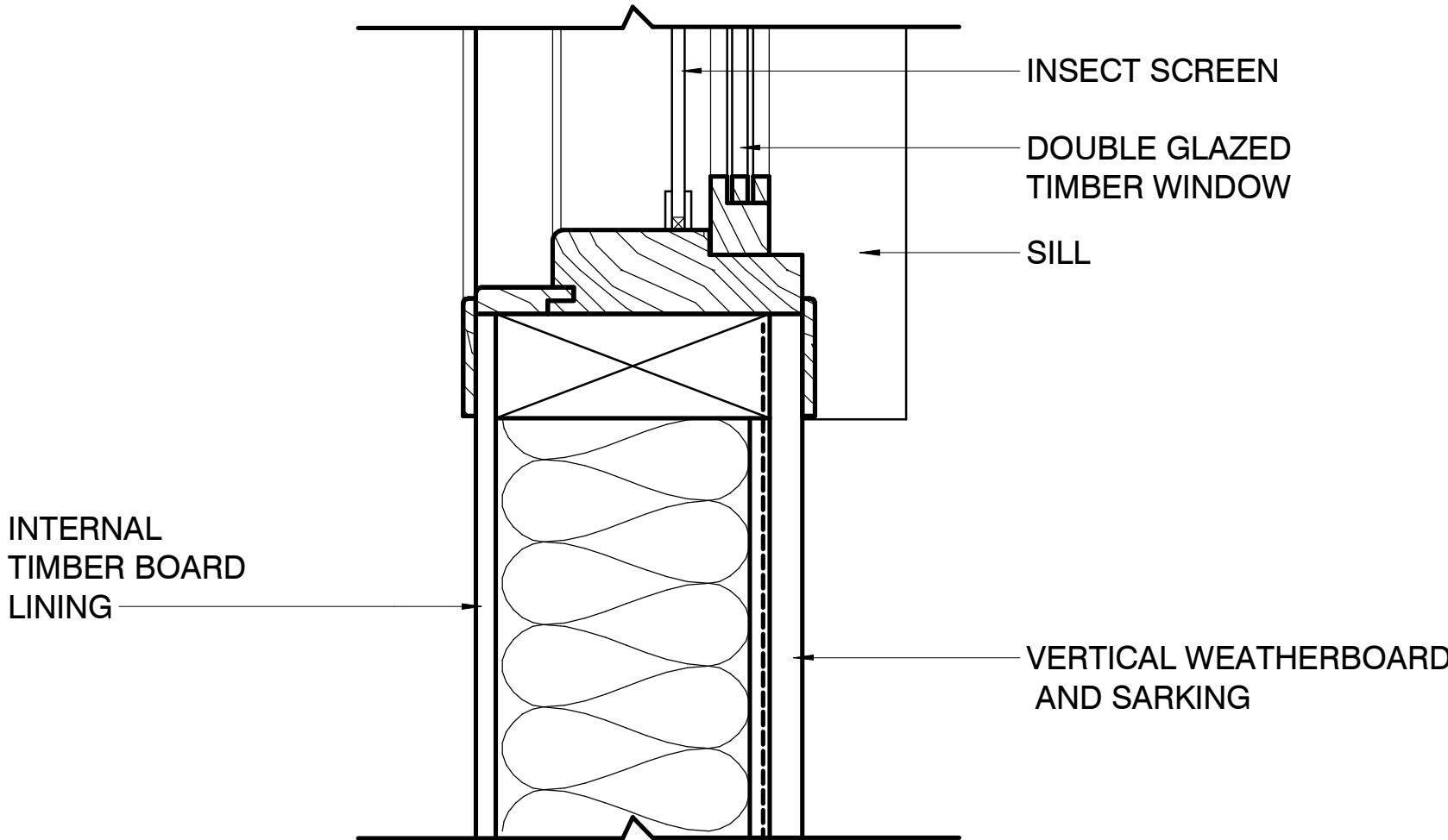


Colour: Basalt

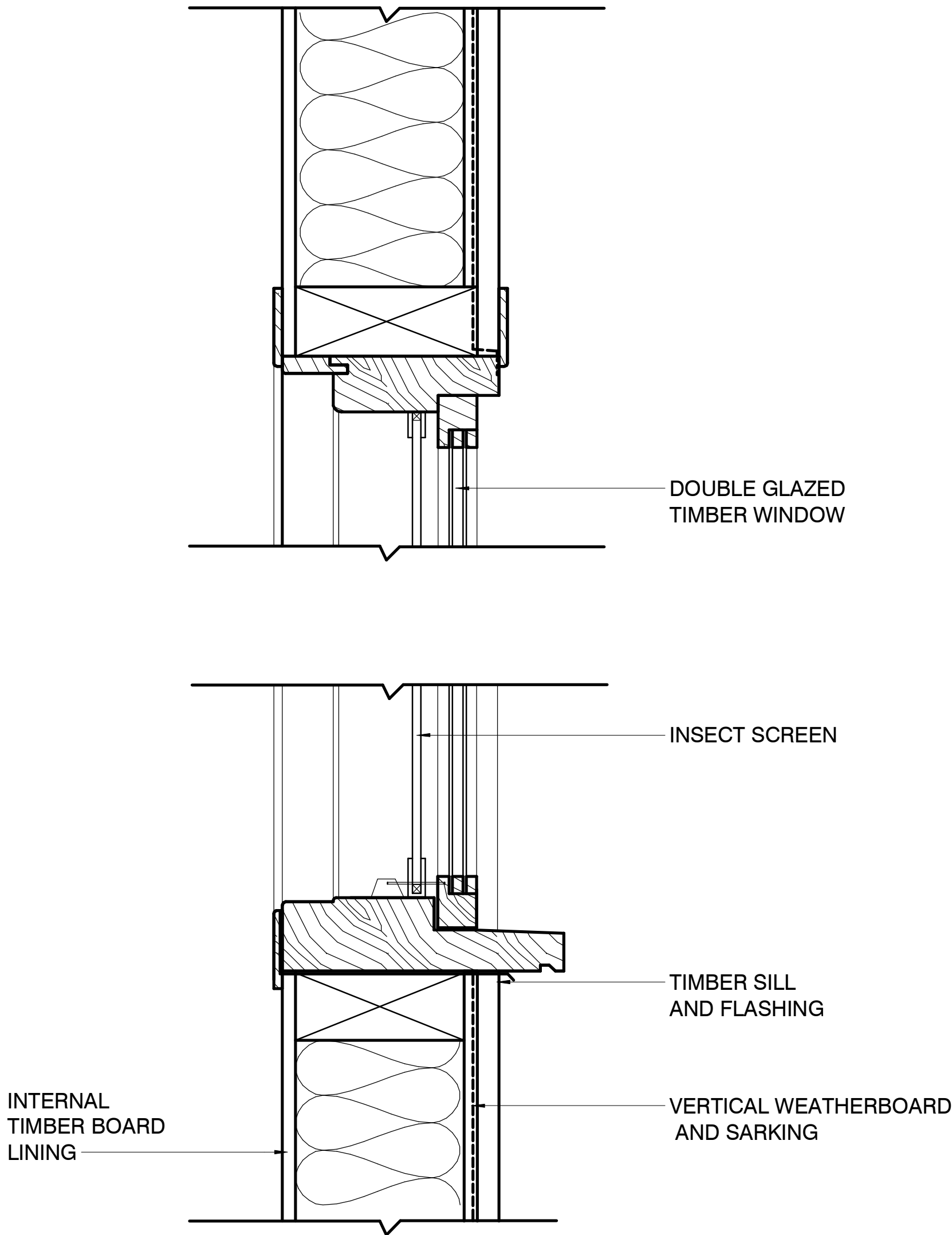
COLOUR SAMPLE FOR PAINT FINISH

NOTE:

- THESE DIAGRAMS INDICATE THE TYPICAL WINDOW INSTALLATION WINDOW DETAIL
- IT IS INTENDED TO RETAIN ALL WINDOWS
- IF DURING CLADDING REPLACEMENT A WINDOW IS FOUND TO BE DAMAGED AND CANNOT BE REPAIRED INSITU, A NEW TIMBER FRAMED DOUBLE GLAZED WINDOWS SIMILAR TO EXISTING WILL BE INSTALLED



JAMB SECTION



HEAD-SILL SECTION

ISSUE	DATE	SUBJECT	AUTHORISED
A	05/08/22	ISSUED FOR COMMENT	RG

This drawing should be read in conjunction with all relevant contracts, specifications and drawings. Dimensions are in millimetres. Levels are metres. Do not scale off drawings. Use figured dimensions only. Check dimensions on Site. Report discrepancies immediately.

SHEET STATUS
DEVELOPMENT APPLICATION

PROJECT	CLIENT	ARCHITECT	DRAWN BY	SCALE	SHEET SIZE	ORIGIN DATE
Alpine Hotel Cladding Replacement Friday Drive, Thredbo	KT Pty Ltd	<div><div><div>djrd</div><div>architects</div></div><div><div>T +612 9319 2955</div><div>ABN: 48 942 921 969</div><div>Nominated Architects:</div><div>Andrew Hipwell 6562</div><div>Daniel Beekwilder 6192</div></div></div> <div><div>63 Myrtle Street</div><div>Chippendale NSW 2008</div><div>Sydney Australia</div><div>djrd.com.au</div></div>	Author	1 : 5		08/04/22
			DESCRIPTION			
			DETAILS			
			PROJECT No	DRAWING No	REVISION	
			22_434	A2.102	A	